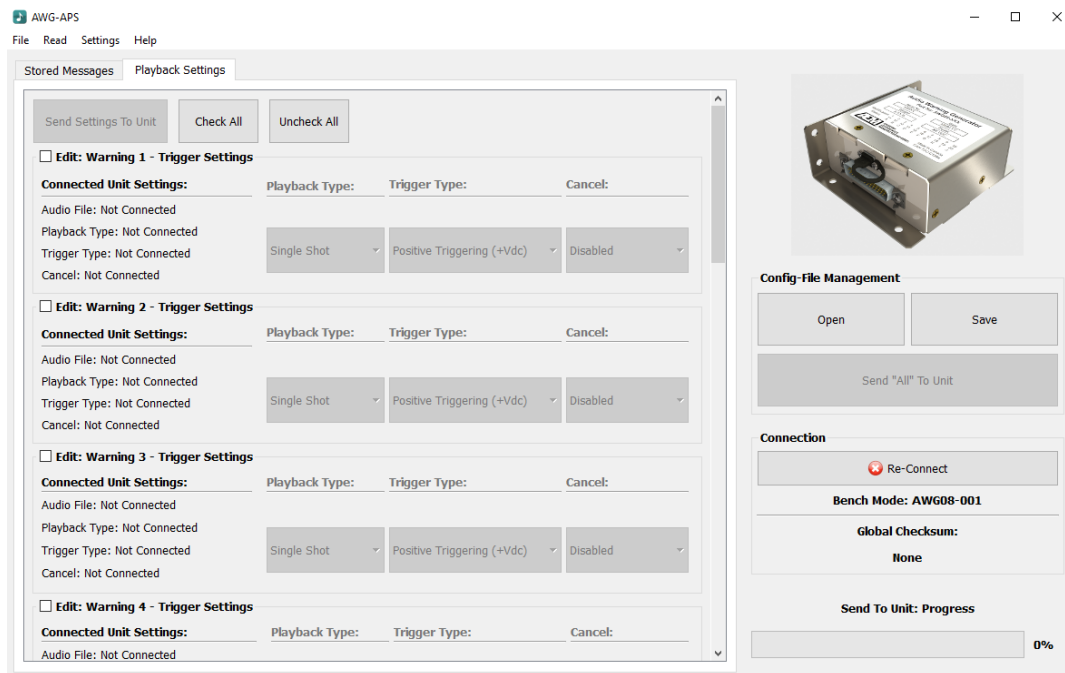




ASM-AWG-APS

AWG-APS Audio Programming Software



INSTALLATION AND OPERATION MANUAL

REV 1.00 January 02, 2019

Anodyne Electronics Manufacturing Corp.
15-1925 Kirschner Road
Kelowna, BC, Canada.
V1Y 4N7

Telephone (250) 763-1088
Facsimile (250) 763-1089

Website: www.aem-corp.com

© 2014 Anodyne Electronics Manufacturing Corp. (AEM),
All Rights Reserved



AWG-APS Audio Programming Software Installation and Operation Manual

COPYRIGHT STATEMENT

© 2018 Anodyne Electronics Manufacturing Corp. (AEM), All Rights Reserved

This publication is the property of AEM and is protected by Canadian copyright laws. No part of this document may be reproduced or transmitted in any form or by any means including electronic, mechanical, photocopying, recording, or otherwise, without the prior written permission of AEM.



AWG-APS Audio Programming Software Installation and Operation Manual

Table of Contents

| Section | Title | Page |
|------------|--|------|
| 1.0 | Description | |
| 1.1 | Introduction | 1-1 |
| 1.2 | Product Description | 1-1 |
| 1.3 | Software Features | 1-1 |
| 1.4 | Limitations of Use | 1-1 |
| 2.0 | Installation | |
| 2.1 | Introduction | 2-1 |
| 2.2 | Required Accessories for Installation | 2-1 |
| 2.3 | Installation Procedure | 2-1 |
| 3.0 | Operation | |
| 3.1 | Introduction | 3-1 |
| 3.2 | Function Overview | 3-1 |
| 3.2.1 | File: Set To Default | 3-1 |
| 3.2.2 | File: Clone Connected Unit | 3-1 |
| 3.2.3 | File: Production Mode | 3-1 |
| 3.2.4 | Read: All Checksums | 3-2 |
| 3.2.5 | Read: To Wav File | 3-2 |
| 3.2.6 | Read: Read Settings From Unit | 3-2 |
| 3.2.7 | Settings: Set Audio Directory Location | 3-2 |
| 3.2.8 | Settings: Set Config File Directory Location | 3-2 |
| 3.2.9 | Settings: Bench Mode | 3-2 |
| 3.2.10 | Settings: Automatic Connection | 3-2 |
| 3.2.11 | Help: AWG-APS Manual | 3-2 |
| 3.2.12 | Help: About | 3-2 |
| 3.2.13 | Config File Management | 3-2 |
| 3.2.14 | Connection | 3-3 |
| 3.2.15 | Progress Bar | 3-3 |
| 3.2.16 | File Playback | 3-3 |
| 3.2.17 | Check All | 3-3 |
| 3.2.18 | Uncheck All | 3-3 |
| 3.2.19 | Saving Configuration Files | 3-3 |
| 3.2.20 | Opening Configuration Files | 3-3 |
| 3.2.21 | Selecting .Wav Files | 3-3 |
| 3.2.22 | Clearing Selected .Wav Files | 3-3 |
| 3.2.23 | Troubleshooting Log Files | 3-3 |
| 3.3 | Operation | 3-4 |
| 3.3.1 | Main Program Window | 3-4 |
| 3.3.2 | Connecting to a Unit (Application Previously Opened) | 3-4 |
| 3.3.3 | Connecting to a Unit (Application Not Previously Opened) | 3-5 |
| 3.3.4 | Disconnecting a Unit | 3-6 |
| 3.3.5 | Loading New Audio Files (Stored Messages Tab) | 3-6 |
| 3.3.6 | Audio File Playback | 3-10 |



AWG-APS Audio Programming Software Installation and Operation Manual

| | | |
|--------|--|------|
| 3.3.7 | Change Unit Settings (Playback Settings Tab) | 3-10 |
| 3.3.8 | Send All to Unit | 3-14 |
| 3.3.9 | Bench Mode | 3-15 |
| 3.3.10 | Create a Config File | 3-16 |
| 3.3.11 | Load a Config File | 3-16 |
| 3.3.12 | File: Production Mode | 3-18 |
| 3.3.13 | File: Set To Default | 3-18 |
| 3.3.14 | File: Clone Connected Unit | 3-19 |
| 3.3.15 | File: Production options | 3-20 |
| 3.3.16 | Read: All Checksums | 3-20 |
| 3.3.17 | Read: To Wav File | 3-21 |
| 3.3.18 | Read: Read Settings From Unit | 3-22 |
| 3.3.19 | Settings: Set Audio Directory Location | 3-22 |
| 3.3.20 | Settings: Set Config Directory Location | 3-23 |
| 3.3.21 | Settings: Bench Mode | 3-24 |
| 3.3.22 | Settings: Automatic Connection | 3-25 |
| 3.3.23 | Help: AWG-APS Manual | 3-25 |
| 3.3.24 | Help: About | 3-25 |
| 3.3.25 | Troubleshooting Log File | 3-26 |
| 3.4 | AWG-APS Troubleshooting | 3-26 |
| 3.4.1 | No Product Found | 3-26 |
| 3.4.2 | File Not Supported | 3-27 |
| 3.4.3 | File Too Long | 3-28 |
| 3.5 | Audio File Requirements (.Wav) | 3-28 |
| 3.5.1 | Free Audio Editing Software Examples | 3-28 |
| 3.5.2 | File Format | 3-28 |
| 3.5.3 | File Data Requirements | 3-28 |