



# LSS1320-139

## Loudspeaker System

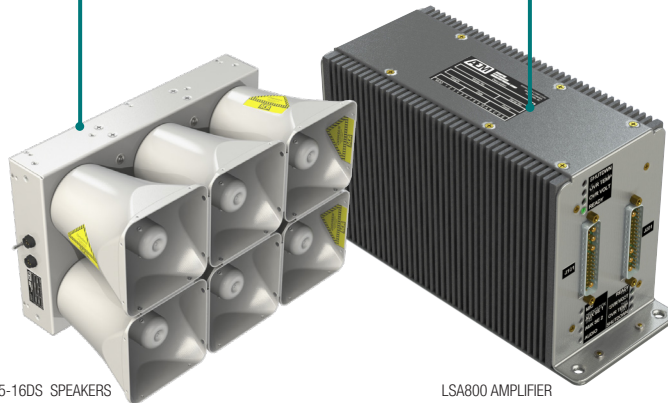
An optimized audio signal with over 1320W of effective, peak audio output power.

### Highlights

- **Designed** to meet the operational roles of both current and future medium, super medium, and heavy helicopters
- **Delivers** 1320W of effective, peak audio output power
- **Amplified** sound power output from a smaller mechanical footprint

Six-bell, high-power speaker with steel chassis that provides magnetic shielding

'Smart Power Supply' allows the amplifier to 'adapt' to meet the output load demand



TS95-16DS SPEAKERS

LSA800 AMPLIFIER



LSC22 CONTROLLER

Convenient onboard digital storage means fast recording and playback of your messages

## LSS1320-139 Features

AEM's LSS1320-139 loudspeaker system comprises controllers, amplifiers, and speakers to deliver fantastic sound quality and power output in a smaller, less expensive package than comparable systems on the market today.

We designed and qualified the LSS1320-139 system to meet customer-specific requirements for AW139 SAR applications, but the system also fits the operational roles of other medium and super medium helicopters such as the Surion, AW189, EC175, and S-92.

- Front-mount auxiliary input allows message transmission from an MP3 player or smartphone
- Convenient onboard digital storage for fast recording and playback
- Processes and optimizes the audio signal for the best audio output
- Over 1320W+ of effective, peak audio output power
- DO-160G and DO-214 qualified
- Optional NVIS compatible lighting
- Optional MIL-STD Speaker Connectors

The TS95-16DS is a six-bell, high-power speaker with a steel chassis that provides magnetic shielding. We fitted the TS95 with updated high-power speaker drivers to produce higher conversion of electrical power (watts) to sound pressure (SPL). Our TS95 stemmed from the same mechanical configuration as the legacy TS92-06xx series speakers, enabling it to be used for loudspeaker system upgrades with, typically, minor mechanical modifications to the aircraft speaker mount.

## Specifications

LSC22 Series Loudspeaker Controller



### LSC22 MECHANICAL SPECS

Height	1.11"
Width	5.74"
Length	6.32"
Weight	1.30 lb

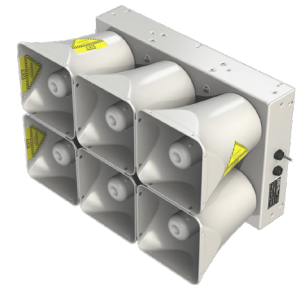
LSA800 Loudspeaker Amplifier



### LSA800 MECHANICAL SPECS

Height	5.51"
Width	3.74"
Length	9.86"
Weight	6.30 lb (MAX)

TS95-16DS Speaker



### TS95-16DS MECHANICAL SPECS

Weight	49.50 lb
Height	10.84"
Width	20.10"
Length	13.40"

For more details, please email:  
[products@aem-corp.com](mailto:products@aem-corp.com)  
and see Installation & Operation  
manuals on our website:  
[aem-corp.com](http://aem-corp.com)

*LEADING  
BY DESIGN*