



# LSS1320

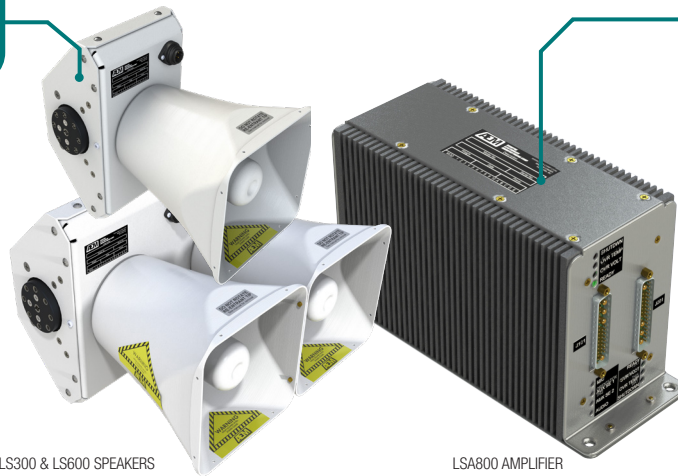
## Loudspeaker System

An optimized audio signal with over 1320W of effective, peak audio output power.

### Highlights

- **Designed** to meet the operational roles of both current and future medium, super medium, and heavy helicopters
- **Delivers** 1320W of effective, peak audio output power
- **Amplified** sound power output from a smaller mechanical footprint

Powerful speaker drivers with a robust design



'Smart Power Supply' allows the amplifier to 'adapt' to meet the output load demand

Convenient onboard digital storage means fast recording and playback of your messages



## LSS1320 Features

AEM's LSS1320 loudspeaker system delivers fantastic sound quality and power output in a smaller, less expensive package than comparable systems on the market today.

We designed and qualified the LSS1320 system to meet the operational roles of both current and future medium, super medium, and heavy helicopters including the AW139, AW189, EC175, S-92, EC225, and UH-60.

- Front-mount auxiliary input allows message transmission from an MP3 player or smartphone
- Convenient onboard digital storage for fast recording and playback
- Processes and optimizes the audio signal for the best audio output
- Over 1320W+ of effective, peak audio output power
- DO-160G and DO-214 qualified
- Optional NVIS compatible lighting
- Optional MIL-STD Speaker Connectors

Meeker Aviation worked with AEM to adapt their speaker bracket (Meeker Part #AFM-SB-1-1C, to fit the LS300-200 and #AFM-SB-1-1A for the LS600-200 speaker), enabling attachment to several 'payload mounts' that Meeker have certified on various airframes.

## Specifications

LSC22 Series Loudspeaker Controller



**LSC22 MECHANICAL SPECS**

Height	1.11"
Width	5.74"
Length	6.32"
Weight	1.30 lb

LSA800 Loudspeaker Amplifier



**LSA800 MECHANICAL SPECS**

Height	5.51"
Width	3.74"
Length	9.86"
Weight	6.30 lb (MAX)

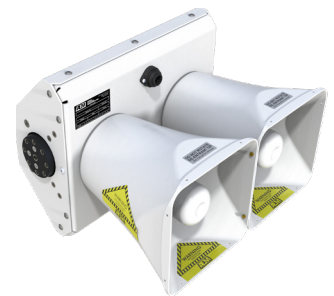
LS300 Speaker



**LS300 MECHANICAL SPECS**

Weight	15 lb (EACH)
Height	10.30"
Width	6.60"
Length	12.80"

LS600 Speaker



**LS600 MECHANICAL SPECS**

Weight	28 lb (EACH)
Height	10.30"
Width	13.20"
Length	12.80"

For more details, please email: [products@aem-corp.com](mailto:products@aem-corp.com) and see Installation & Operation manuals on our website: [aem-corp.com](http://aem-corp.com)

*LEADING  
BY DESIGN*