



LHS41

Loudspeaker System

Drives 142 dB of SPL and intelligibly clear audio at long range.

Highlights

- **Designed** unibody loudspeaker chassis construction with power-saving speaker drivers
- **Delivers** 142 dB of Sound Pressure Level (SPL) with less output power
- **Amplified** 800W peak output power to produce loudest and clearest system to date

Power-saving Direct Drive speaker drivers

'Smart Power Supply' allows the amplifier to 'adapt' to meet the output load demand

LS800-34DT SPEAKERS

LSA800-002 AMPLIFIER

LSC22-10XN CONTROLLER

Field-adjustable mic input sensitivity function to boost low level mic signals and reduce feedback

LHS41 Features

The Loud Hailer System (LHS) is AEM's newest in loudspeaker system technology. Building upon the successes and high performance of AEM's existing family of loudspeaker systems, the LHS41 delivers unmatched audio quality and Sound Pressure Level (SPL) output from an impressively efficient and relatively compact mechanical package.

The LHS41 is designed and qualified to fully meet the operational special roles of both super medium and heavy rotary wing aircraft.

- Front-mount auxiliary input allows message transmission from an MP3 player or smartphone
- Convenient onboard digital storage for fast recording and playback
- Field-adjustable mic input sensitivity function to boost low level mic signals and reduce feedback
- Power-saving Direct Drive loudspeaker drivers
- Unibody loudspeaker chassis construction
- DO-160G and DO-214 qualified
- Standard NVIS compatible lighting
- Standard MIL-STD Speaker Connectors

Made up of the LS800-34DT (Loudspeaker), LSA800-002 (Amplifier) and LSC22-10xN (Controller), the LHS41 produces 142 dB with extremely low distortion levels and a full system weight at a lean 36.6 lb (MAX).

Specifications

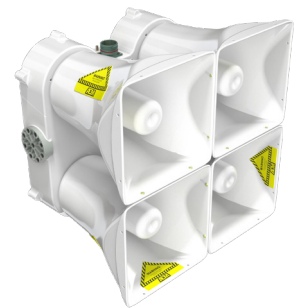
LSC22-10xN Loudspeaker
Controller



LSA800-002 Loudspeaker
Amplifier



LS800-34DT
Speaker



MECHANICAL SPECS

Height	1.11" [28.2 mm] MAX
Depth (behind panel)	6.34" [161.0 mm] MAX
Depth (behind panel with connectors)	6.59" [167.4 mm] MAX
Width (behind panel)	4.84" [122.9 mm] MAX
Width (front panel)	5.74" [145.8 mm] MAX
Weight	1.3 lb [0.59 kg] MAX

MECHANICAL SPECS

Height	5.51" [140 mm] MAX
Width	3.74" [95 mm] MAX
Length	9.86" [250.4 mm] MAX
Weight	6.30 lb [2.9 kg] MAX

MECHANICAL SPECS

Height	11.06" [281 mm] MAX
Width	15.1" [383.5 mm] MAX
Length	15.1" [383.5mm] MAX
Weight	29 lb [13.2 kg] MAX

For more details, please email:
products@aem-corp.com
and see Installation & Operation
manuals on our website:
aem-corp.com

*LEADING
BY DESIGN*